



## Rabbit anti Casein (kappa) Polyclonal Antibody

Alternative Name(s): CSN3, CSN10, CSNK, Casein Kappa

### Order Information

- **Description:** Casein (kappa)
- **Catalogue:** 600-830
- **Lot:** See label
- **Size:** 100ug/200ul
- **Host:** Rabbit
- **Clone:** nan
- **Application:** IHC(P), WB
- **Reactivity:** Ms

### **ANTIGEN PREPARATION**

A synthetic peptide corresponding to the N-terminus of mouse Casein protein.

### **BACKGROUND**

Casein is the predominant phosphoprotein which has no disulphide bridges but rich in proline. It is found in fresh milk, as a salt of calcium. Casein is not coagulated by heat. It is precipitated by acids and by rennet, a proteolytic enzyme typically obtained from the stomachs of calves. The enzyme trypsin can hydrolyze off a phosphate-containing peptide. This protein is synthesized by mammary epithelium only in the presence of lactogenic hormone combination of insulin, hydrocortisone, and prolactin. Enhancement of the rate of secretion of newly-synthesized caseins occurs when mammary explants are challenged in vitro with agents that activate protein kinase A (PKA). The PKA-sensitive step(s) in casein secretion is early in the exocytosis pathway but inhibition of PKA does not impair casein maturation. PKA is located on membranes of vesicles situated in the Golgi region. Casein positive cells are present in all breast carcinomas with a variable distribution and degree of staining. Casein serves as an in vitro marker of terminally differentiated breast luminal epithelial cells.

### **PURIFICATION**

The Rabbit IgG is purified by Epitope Affinity Purification

### **FORMULATION**

This affinity purified antibody is supplied in sterile Phosphatebuffered saline (pH7.2) containing antibody stabilizer

### **SPECIFICITY**

This antibody recognizes ~21 kDa of mouse Casein protein. The other species are not tested.

### **STORAGE**

The antibodies are stable for 24 months from date of receipt when stored at -20oC to -70oC. The antibodies can be stored at 2oC-8oC for three month without detectable loss of activity. Avoid repeated freezing-thawing cycles.

### **APPLICATIONS/SUGGESTED WORKING DILUTIONS\***

- Western Blot: 0.1-1 µg/ml
- ELISA: 0.01-0.1 µg/ml
- Immunoprecipitation: 2-5 µg/ml
- IHC: 2-10 µg/ml
- Flow cytometry: Not tested
- Molecular Weight: 21.0
- Positive Control: Kidney Tissue
- Cellular Location: Cell Membrane

\*Optimal dilutions should be determined by researchers for the specific applications.

### **FOR RESEARCH USE ONLY.**

AbboMax, Inc 2528 Qume Drive, Suite 8, San Jose, California 95131, USA  
1 408-573-1898 (Tel). 1 408-573-1858 (Fax). [www.abbomax.com](http://www.abbomax.com) [info@abbomax.com](mailto:info@abbomax.com)

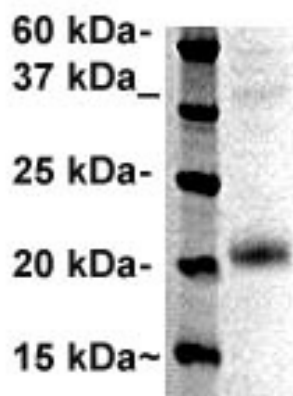


**FOR RESEARCH USE ONLY.**

AbboMax, Inc 2528 Qume Drive, Suite 8, San Jose, California 95131, USA  
1 408-573-1898 (Tel). 1 408-573-1858 (Fax). [www.abbomax.com](http://www.abbomax.com) [info@abbomax.com](mailto:info@abbomax.com)



#### DATA ATTACHMENTS



Western Blot: The whole cell lysate derived from mouse mammary gland was separated in 12% SDS-PAGE, transferred onto NC membrane, and immunoblotted by Rabbit anti -Csnk (Cat#600-830) antibody at 1:500 . An immunoreactive band around ~21 kDa was observed.

#### REFERENCES

#### FOR RESEARCH USE ONLY.

AbboMax, Inc 2528 Qume Drive, Suite 8, San Jose, California 95131, USA  
1 408-573-1898 (Tel). 1 408-573-1858 (Fax). [www.abbomax.com](http://www.abbomax.com) [info@abbomax.com](mailto:info@abbomax.com)